

# **Fleet Manager II**

## **Auto Detect IntelliDoX Modules**

### **Addendum**

50106600-001 OM-EN-AD1-FMII\_4.3\_A1  
©2016 BW Technologies by Honeywell. All rights reserved.

## IntelliDoXs



This section provides instructions for adding, modifying, viewing, filtering, and exporting data related to the IntelliDoX docking modules in your portable gas detection fleet. It also includes basic information related to configuring and managing network settings for IntelliDoX modules that are connected to a network.

### Add an IntelliDoX Record

There are three ways to add IntelliDoX records to the Fleet Manager II database:

1. Auto detect IntelliDoX modules that are connected to the same network and subnet as the computer on which Fleet Manager II is installed;
2. Add a new record and type the serial number and other information for each IntelliDoX module in your portable gas detection fleet; or
3. Import serial numbers and other IntelliDoX information from a CSV file.

When IntelliDoX modules are connected to a network, you can use Fleet Manager II to retrieve datalogs, events logs, bump test results and calibration results. You can also use Fleet Manager II to transfer detector and module settings to one or more modules.

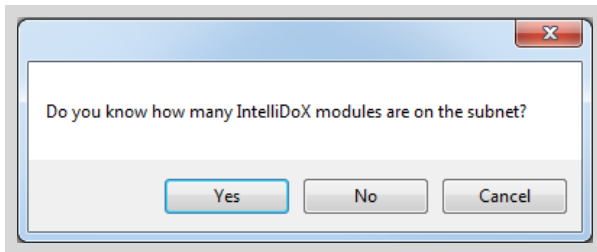
### Auto Detect IntelliDoX Modules

To automatically detect IntelliDoX modules that are connected to the same network and subnet as the computer on which Fleet Manager II is installed, complete the following procedure:

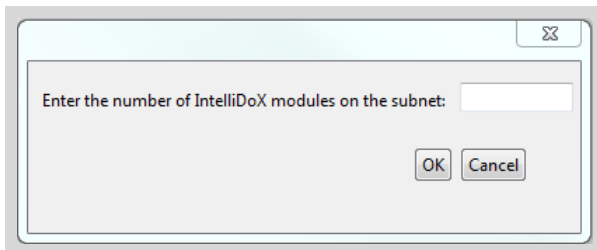
1. Start Fleet Manager II and login as an Administrator.
2. From the **Administration** toolbar, click **IntelliDoXs**. The **Manage IntelliDoXs** data table is displayed.

Serial Number	Location	Type	IP Address	Ip Mode	Mac Address	Firmware Version	Status
5345DOX01142800016		BW Clip	192.0.2.15	static	94:CA:0F:00:02:32	FMSUMF_04_027	Connected
5345DOX01141800012		ConneX1	192.0.2.16	DHCP	94:CA:0F:00:01:FB	FMSUMF_04_027	Connected
5345DOX01141800017		ConneX1	192.0.2.17	DHCP	94:CA:0F:00:02:03	FMSUMF_04_027	Connected

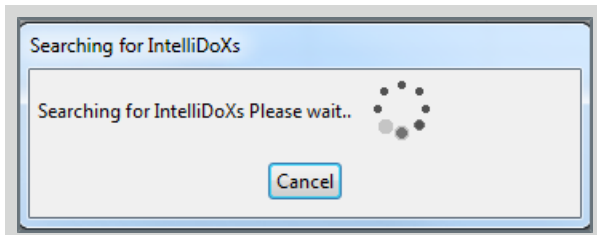
- Click **Auto Detect** on the button menu at the bottom of the data table.



- If you know how many IntelliDoX modules are connected to the subnet, click **Yes**. If do not know how many IntelliDoX modules are connected to the subnet, click **No** and skip to step 6.



- Enter the number of IntelliDoX modules connected to the subnet. You can enter a number between 1 and 100. Click **OK** to search the subnet for the IntelliDoX modules. The **Searching for IntelliDoXs** dialog box is displayed.



- Fleet Manager detects IntelliDoX modules that are connected to the same network and subnet as the computer on which it is installed. When Fleet Manager detects a new IntelliDoX module, a new record is automatically added to the database. When Fleet Manager detects an IntelliDoX that is already added to the database, the record is automatically updated.
- After the Auto Detect operation is complete, the **Searching for IntelliDoXs** dialog box closes and the Manage IntelliDoXs data table is displayed. All detected IntelliDoXs modules are added to the table.

For further instructions for adding, modifying, viewing, filtering, and exporting data related to the IntelliDoX modules in your portable gas detection fleet, refer to the **Administration of IntelliDoXs** section in the Fleet Manager II operator manual.