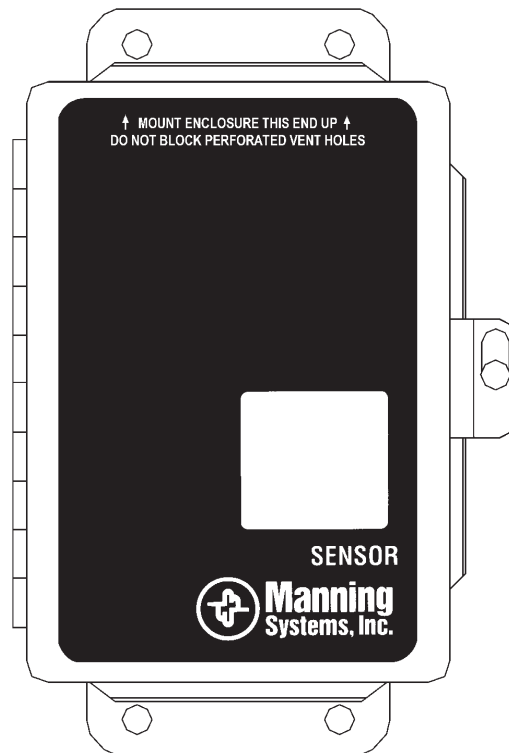


INSTRUCTION AND INSTALLATION MANUAL

EC-F2 SENSOR FOR CHLORINE DIOXIDE



Model EC-F2-ClO₂



11511 West 83rd Terrace
Lenexa, Kansas 66214
ph. 913.894.1185
fax 913.894.1296

CONTENTS



<u>Section</u>	<u>Title</u>	<u>Page</u>	<u>Serial Number</u> _____
1	Sensor Description	2	
2	Installation	3	
3	Operation	5	
4	Warranty	7	

1 SENSOR DESCRIPTION



A Introduction

This manual has been prepared to help in the use and installation of the Manning Systems' Model EC-F2-CLO₂ (Electrochemical-Chlorine Dioxide) Sensor. This manual will convey the operating principles of the sensor, ensure proper installation, and demonstrate start-up and routine maintenance procedures for the sensor.

This manual must be carefully followed by all individuals who have or will have the responsibility for using or servicing the sensor. Warranties made by Manning Systems, Inc. with respect to this equipment will be voided if the equipment is not used and serviced in accordance with the instructions in this manual. If in doubt about a procedure, please contact Manning Systems, Inc. before proceeding.

B System Description

The Manning Systems' EC-F2 Sensor is a three-wire, 4/20 mA sensor for chlorine dioxide available in ranges of 0-1 ppm, and 0-2 ppm.

The unit exhibits excellent accuracy and precision, with negligible response to common interference gases and dramatic changes in relative humidity. The unit exhibits extremely high reliability with no moving parts.

Monitoring equipment must be configured to indicate a fault if the signal is less than 1.5 mA. All signals over 20 mA must be considered a high gas concentration.

System Specifications:

Electrical Power: 24 Volts DC regulated, 30 mA. With a heated enclosure, the current draw is 300 mA max.

Output: Linear 4/20 mA output into a load resistor of 250 ohm maximum.

Cable Recommendation: Three-conductor, 18 AWG, stranded, shielded cable with drain wire all enclosed in a vinyl jacket (Belden #8770 or equivalent).

Cable Length to Sensor: 1,500 feet maximum.

Unit Enclosure: NEMA 1, gasketed, 16-gauge steel. Special enclosures available for low temperatures, washdown areas, etc.

Note: The standard EC-F2 is for use in non-classified areas only.

Sensor Specifications:

Type: Chlorine dioxide-selective electrochemical gas sensor/transmitter Model EC-F2-CLO₂

Method of Detection: Electrochemical.

Ranges Available:

0-1 ppm

0-2 ppm

Accuracy: +/- 3% of full scale.

Humidity: 5-95% RH (non-condensing). Modifications are available for more severe conditions.

Operating Ambient Temperature range: -15° F to 120° F. Modifications are necessary for refrigerated areas.

Storage Temperature: -40° F to +70° F. Keep sensor as cool as possible during long-term storage to extend the life of the cell.

Gas Sampling: Diffusion.

Weight: 3 pounds.

Dimensions: 6" high x 4" wide x 3.5" deep.



A Locating the Sensor

Because each sensor can only “report” what it is smelling at the moment, **it is very important that the sensor be located where leaks are most likely to occur.** When used to protect against leakage from chlorine dioxide generating equipment, locate the sensor close to the equipment, piping, valves, etc.

Chlorine dioxide vapor is about twice the weight of ambient air, so in a room with no air movement it will tend to settle. For area personnel protection, consider mounting the sensor in the normal breathing zone (4-5 ft. above floor)

General: The location should be chosen to protect the sensor from water, excessive humidity, and vibration. **MOST SENSOR REPLACEMENT IS DUE TO WATER DAMAGE!** Protect sensors from hose-down by clean-up and maintenance crews.

As a general rule, locate sensors **no closer** than 3 feet from walls or 1 foot from the floor. Take air movement and ventilation patterns into account when locating sensors.

No matter where the sensor is mounted, it must be easily accessible.

General Mounting Considerations:

- Must be easily accessible for calibration and maintenance.
- Always mount the sensor vertically.
- Mount the sensor close to the potential leak source.
- If personnel protection is the primary application, mount in the “breathing zone.”
- Protect sensor from water, excessive humidity, and wash-down.
- Take air movement and ventilation patterns into account.
- Protect sensor from physical damage (fork lifts, etc.).
- For highly critical locations more than one sensor should be installed in each room.

To prevent electrical interference, keep sensor and wire runs away from mercury vapor lights, high pressure sodium lights, variable speed drives, radio repeaters, etc. as much as possible. Connect the bare shield wire of the instrument cable to the terminal block marked *SHLD* at the sensor. Be sure it is not touching the metal enclosure, and that it is properly grounded at the readout unit.

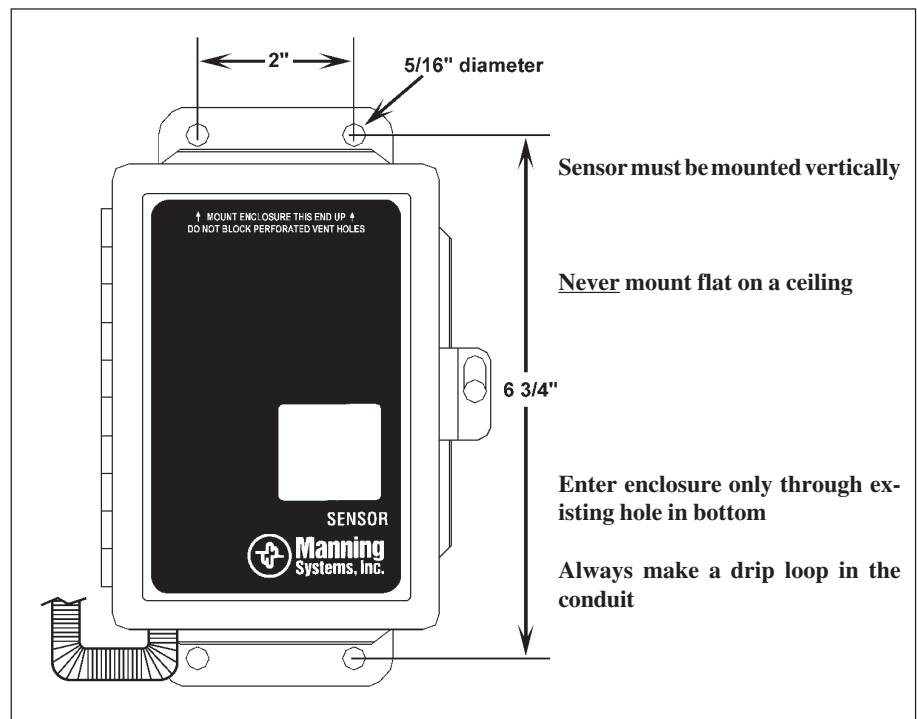


Figure 1: Mounting dimensions for the EC-F2 Sensor



B Wiring

Figure 2 presents wiring information for the EC-F2 sensor.

Electrical wiring must comply with all applicable codes. Plant equipment that may be involved and operating conditions should be discussed with local operating personnel to determine if any special needs should be taken into account.

Almost all start-up problems are due to improper wiring or monitor configuration. Please follow these guidelines carefully.

Always use three conductor, insulated, stranded, shielded copper cable. Use only three conductor cable, not two cables of two conductor wire.

Do not pull sensor wiring with AC power cables. This will cause electrical interference. Be sure there are no breaks or splices in sensor wiring runs. If cable runs cannot be made without a splice, all connections must be soldered. Soldering should be done using a rosin flux to tie the connecting ends of sensor wires to ensure a positive and long-lasting contact.

Ground the shield at the main control panel. Connect the shield wire in the sensor terminal block labeled *SHLD*. Tape all exposed shield wire at the sensor to insulate it from the enclosure.

All penetrations into a refrigerated room should be sealed to prevent condensate from forming in the conduit and dripping into the sensor enclosure. Silicone should not be used near the sensor, because silicone can damage the sensor.

Make drip loops for cables going into sensor housings. When heated enclosures are used, follow the special mounting instructions on the enclosure (*This End Up*).

Mount sensor enclosures through the flange holes as shown in Figure 1, and always mount vertically.

Electrical Power: 24 VDC regulated, 30 mA. With a heated enclosure the current draw is 300 mA max.

Output: Circuit board mounted sensor provides a linear 4/20 mA output. Monitoring equipment may have a maximum input impedance of 250 ohms.

Cable Recommendation: No. 18/3 shielded cable (Belden #8770 or equivalent). Length of cable to sensor should be no greater than 1,500 feet. Use only the existing punched holes for connections to the sensor.

Monitoring: The EC-F2 Chlorine Dioxide Sensor may be monitored by the Manning Systems' Model 20, GM-1, GM-JR, GM-10, or other appropriately configured system. Monitoring equipment must be configured to indicate a fault if the signal is below 1.5 mA. All signals over 20 mA must be considered a high gas concentration.

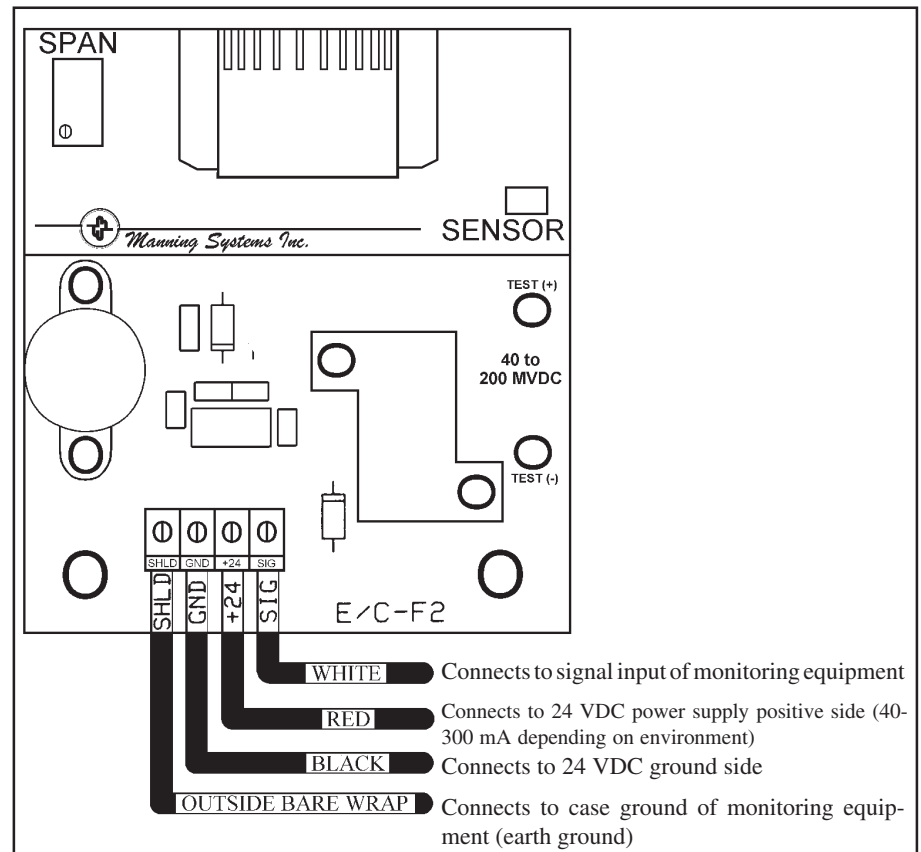


Figure 2: Wiring diagram for the EC-F2 Sensor



A Start-Up Procedures

Before applying power, make a final check of all wiring for continuity, shorts, grounds, etc. (see Figure 3, Note 5). It is usually best to disconnect external alarms and other equipment from the sensor until the initial start-up procedures are completed.

After power-up, allow 24 hours for the system to stabilize before testing the sensors. Because sensors are normally located at a distance from the main unit, the test time required and accuracy of the response checks will be improved if two people perform the start-up procedures and use radio contact.

Start-Up Test:

1) One person exposes each sensor to a small amount of the gas that is being monitored.

2) The second person stays at the control unit to determine that each sensor, when exposed to the gas fumes, is connected to the proper input and responds, causing appropriate alarm functions.

This test can be done quickly and easily using a small bottle containing one tablespoon of dry calcium hypochlorite. Calcium hypochlorite is the dry powder used to chlorinate swimming pools and is available from any pool supply. This test is not intended to produce a specific value, but is simply to validate the proper operation of the detector, because chlorine gas is released from calcium hypochlorite.

B Calibration

The EC-F2 Sensor comes factory calibrated and should require minimal adjustments after installation. There are two pots on the pre-amp that are used for calibrations.

Zero Calibration: After the unit is installed and has been powered up for a minimum of 24 hours, the unit should be zero calibrated by the following:

- Be sure the unit is in clean air.
- Adjust the zero pot until the sensor outputs 4.0 mA (40 mV from Test [-] to

Test [+]) (see Figure 3, Note 2 and 4).

Span Calibration: The unit is factory calibrated and normally does not need to be spanned upon initial installation. Manning Systems uses a permeation standard for generating calibration gas to insure the highest possible accuracy. This chlorine dioxide sensor can be calibrated with chlorine gas if a multiplication factor of 2 is applied, e.g. 1/2 ppm chlorine = 1 ppm chlorine dioxide. **DO NOT ADJUST THE SPAN POT WITHOUT CERTIFIED CALIBRATION GAS!** If span adjustment is required, the following procedure will span the unit:

- Perform zero adjustment before spanning.

- Apply span gas at 0.8 L/min (span gas must be in air, not nitrogen or other carrier).

- After span gas has been on sensor for two minutes, adjust the span pot until the correct output is achieved (see Figure 3, Note 1).

Manning Systems can provide a rapid turnaround factory calibration service. If factory recalibration is required, prepare the unit for shipment and contact Manning Systems for details.

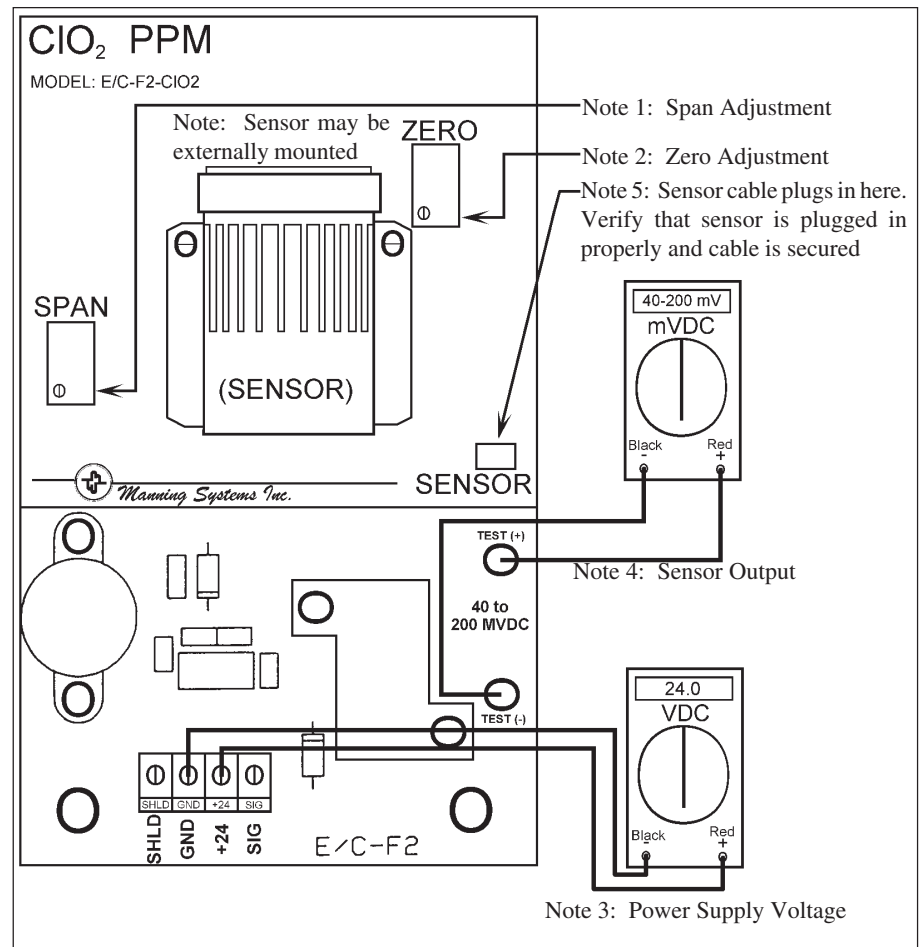


Figure 3: Checking sensor output, power supply voltage, and zero and span adjustments to the EC-F2 Sensor



C Trouble-Shooting

If the sensor output is 0 mA: First, verify +24 VDC at the sensor terminal block (see Figure 3, Note 3).

Second, check voltage between Test (-) and Test (+) (see Figure 3, Note 4). Voltage should be in the range of 40 mV to 200 mV corresponding to an actual current flow of 4 to 20 mA. If this voltage is 0 mV, the signal has no path to ground. Check monitoring equipment connections and configuration. Input impedance must be 250 ohms or less.

Electrical Interference: This sensor has been designed to be highly resistant to EMI/RFI using multiple stages of filtering and protection. However, in extreme environments, some noise pickup can occur directly through the sensor. Ensure that the bare shield wire of the instrument cable is connected to the terminal block marked *SHLD* at the sensor (not touching the metal enclosure) and properly grounded at the readout unit.

Interference Gases: The EC-F2-CIO₂ is designed to be quite specific to chlorine dioxide. However, some other gases can affect the reading. The sensor will also respond to other reducing gases such as fluorine, ozone, bromine and chlorine. Contact Manning Systems if any of these gases are present in your application.

D Maintenance

For proper operation it is essential that the test and calibration schedule be adhered to. Manning Systems recommends the following maintenance schedule:

Expose each sensor to test gases monthly to verify that the sensor has a normal response, and more often in highly critical applications. This will also check the alarm lights and relay action of the monitoring equipment.

It is essential that signal voltages be taken and logged on a consistent basis. Periodically, sensors should be exposed to an chlorine dioxide sample and the results logged.

The complete system should be tested regularly to ensure wiring integrity and sensor operation.

It is highly recommended that certified calibration gas be used at a minimum every six months.

Sensor Life: These electrochemical cells are extremely reliable, but several things can cause the cell chemicals to become depleted including:

- a period of time,
- exposure to high temperatures,
- exposure to varying concentrations of the target gas,
- exposure to high moisture for extended periods without proper sensor enclosure.

When the cell becomes depleted, the unit will give no indication of failure other than that the sensor will not respond. For this reason it is **absolutely essential that these units be exercised with a gas sample on a regular and timely basis.**

Typical sensor life in a refrigerated area will be 18 months to 2 years or more. Typical life in a non-refrigerated area will be 12 months or less. Exposure to high levels of chlorine dioxide or chlorine will shorten these times. In addition to timely response checks, a preventative maintenance program of periodic cell replacement should be implemented.

When the cell becomes depleted, a replacement cell can be obtained from Manning Systems. Simply unplug the ribbon cable from the pins labeled *Sensor*, pull the old cell from the spring clip, discard the old cell and replace it with a new one.

The sensor should be calibrated after a 24 hour warm-up period.

E Replacement Parts

For replacement parts, contact Manning Systems. Be sure to give serial number of unit and model number.



Limited Warranty

1. Limited Warranty. Manning Systems, Inc. (“Manning”) warrants to the original purchaser and/or ultimate customer (“Purchaser”) of Manning’s Products (“Product”) that if any part thereof proves to be defective in material or workmanship within eighteen (18) months of the date of shipment by Manning or twelve (12) months from the date of first use by the purchaser, whichever comes first, such defective part will be repaired or replaced, free of charge, at Manning’s discretion if shipped prepaid to Manning at 11511 W. 83rd Terrace, Lenexa, Kansas 66214, in a package equal to or in the original container. The Product will be returned freight prepaid and repaired or replaced if it is determined by Manning that the part failed due to defective materials or workmanship. The repair or replacement of any such defective part shall be Manning’s sole and exclusive responsibility and liability under this limited warranty.

2. Exclusions.

A. If gas sensors are part of the Product, the gas sensor is covered by a twelve (12) month limited warranty of the manufacturer.

B. If gas sensors are covered by this limited warranty, the gas sensor is subject to inspection by Manning for extended

exposure to excessive gas concentrations if a claim by the Purchaser is made under this limited warranty. Should such inspection indicate that the gas sensor has been expended rather than failed prematurely, this limited warranty shall not apply to the Product.

C. This limited warranty does not cover consumable items, such as batteries, or items subject to wear or periodic replacement, including lamps, fuses, valves, vanes, sensor elements, cartridges, or filter elements.

3. Warranty Limitation and Exclusion. Manning will have no further obligation under this limited warranty. All warranty obligations of Manning are extinguishable if the Product has been subject to abuse, misuse, negligence, or accident or if the Purchaser fails to perform any of the duties set forth in this limited warranty or if the Product has not been operated in accordance with instructions, or if the Product serial number has been removed or altered.

4. Disclaimer of Unstated Warranties. THE WARRANTY PRINTED ABOVE IS THE ONLY WARRANTY APPLICABLE TO THIS PURCHASE. ALL OTHER WARRANTIES, EX-

PRESS OR IMPLIED, INCLUDING, BUT NOT LIMITED TO, THE IMPLIED WARRANTIES OF MERCHANTABILITY OR FITNESS FOR A PARTICULAR PURPOSE ARE HEREBY DISCLAIMED.

5. Limitation of Liability. IT IS UNDERSTOOD AND AGREED THAT MANNING’S LIABILITY, WHETHER IN CONTRACT, IN TORT, UNDER ANY WARRANTY, IN NEGLIGENCE OR OTHERWISE SHALL NOT EXCEED THE AMOUNT OF THE PURCHASE PRICE PAID BY THE PURCHASER FOR THE PRODUCT AND UNDER NO CIRCUMSTANCES SHALL MANNING BE LIABLE FOR SPECIAL, INDIRECT, OR CONSEQUENTIAL DAMAGES. THE PRICE STATED FOR THE PRODUCT IS A CONSIDERATION LIMITING MANNING’S LIABILITY. NO ACTION, REGARDLESS OF FORM, ARISING OUT OF THE TRANSACTIONS UNDER THIS WARRANTY MAY BE BROUGHT BY THE PURCHASER MORE THAN ONE YEAR AFTER THE CAUSE OF ACTION HAS OCCURRED.

